

PMA2020 - CÔTE D'IVOIRE

ADOLESCENTS & YOUNG ADULTS HEALTH BRIEF

September-October 2017 (Round 1)



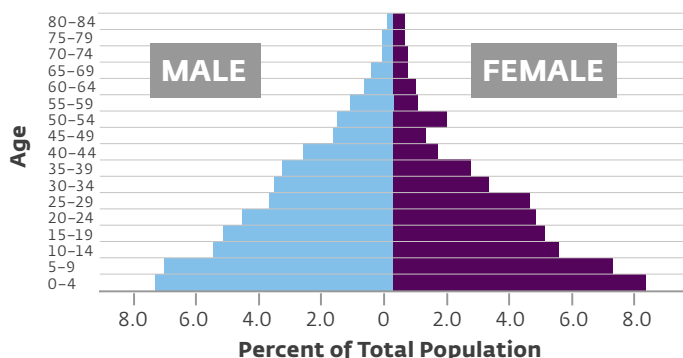
Photo: 2017 Phil Kidd, Courtesy of Flickr

KEY MESSAGES

- Côte d'Ivoire has a large adolescent and youth population.
- Most young women in Côte d'Ivoire live in urban areas.
- Rural women have sex for 8.7 years before first contraceptive use, which is twice as long as urban women.
- Half of unmarried sexually active women age 15-24 use modern contraception; among these, more than half use a male condom.
- Unmarried users are less likely to receive their contraceptive method from a public facility.

Côte d'Ivoire has a large youth population

Population Age-Sex Pyramid



More than 6 in 10 (60.8%) people in Côte d'Ivoire are under 24 years of age. More than 1 in 5 (21.7%) are adolescents (age 10-19 years).

Young women predominantly live in urban areas, and the majority have only primary or no education

Distribution of Female Youth Population (%)

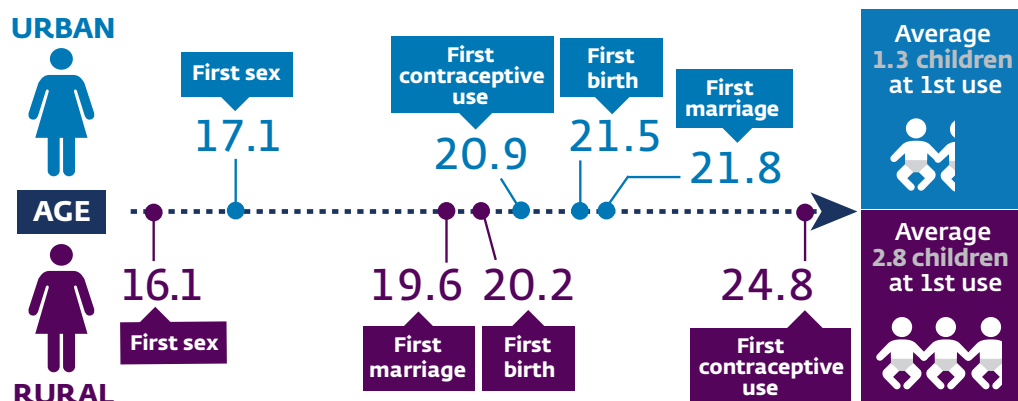
AGE	15-19	20-24	TOTAL
	n=574	n=529	n=1,103
RESIDENCE			
Urban	71.5	62.8	67.3
Rural	28.5	37.2	32.7
EDUCATION*			
Never or Primary	53.0	66.9	59.6
Middle	45.5	25.8	36.1
Secondary +	1.6	7.3	4.3

*Education defined as ever attended

Rural women begin having sex earlier and start using contraception later than urban women

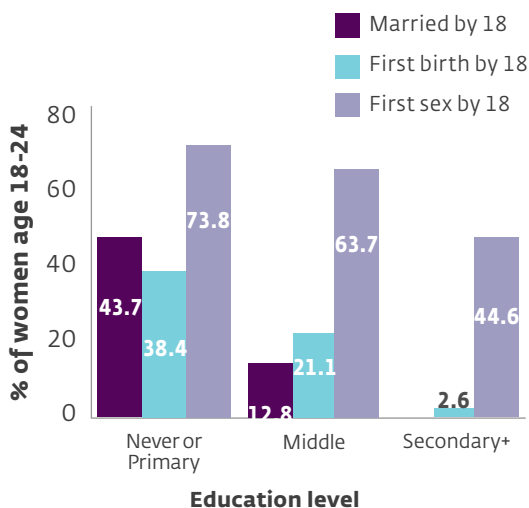
**Median ages are calculated among women age 25-49 to reduce censoring
First sex, first contraceptive use: 15-49 years; first marriage, first birth: 25-49 years

Median** Age at Reproductive Events

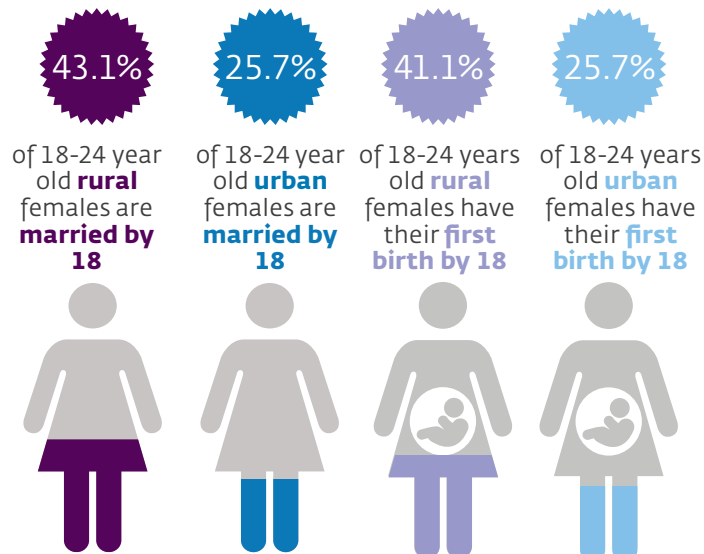


Marked differences in patterns of early marriage and childbearing exist among young women age 18-24

Life events by age 18, by education

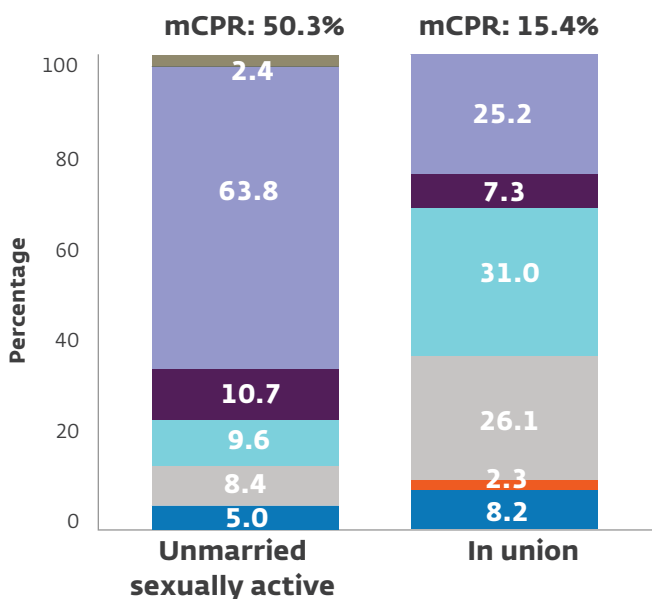


None of the women age 18 to 24 surveyed who had secondary or higher education were married at age 18.



Unmarried sexually active women are less likely to use highly effective contraceptive methods

Method mix among modern users age 15-24, by marital status



Legend: Other modern, Male condom, Emergency, Pills, Injectables, IUD, Implants

mCPR = modern contraceptive prevalence rate

Young unmarried users are less likely than contraceptive users in union to access methods from public facilities and to receive counseling services

Source of contraceptives and counseling among modern contraceptive users age 15-24, by marital status

	Un-married	In Union
SOURCE OF CURRENT CONTRACEPTIVE METHOD	%	%
Obtained method from public facility	13.8	32.1
Obtained method from private facility	66.5	50.6
COUNSELING	%	%
Counseled on other contraceptive methods	25.1	26.6
Counseled on possible side effects	16.2	26.8
Counseled on what to do if experiencing side effects	59.2	96.0

SAMPLE DESIGN

PMA2017/Côte d'Ivoire data provide representative estimates at the national level. A total of 73 enumerations areas (EAs) were selected by the National Statistics Institute using probability proportional to size, from a sampling frame provided by the Fourth General Census of Population and Housing in 2014. Structures, households, and service delivery points (SDPs) were enumerated in each selected EA. Thirty-five households were selected randomly from each EA. All eligible women age 15-49 in the sampled households were contacted and consented for interviews. The SDP sample included three public SDPs that serve an EA and up to three private SDPs within the EA. Data were collected September-October 2017. The final sample included 2,402 household (96.0% response rate), 2,738 women (97.1% response rate) including 1,103 women age 15-24 (97.4% response rate), and 141 SDPs (95.9% response rate), of which 106 are public.

