

# PMA2020 / KENYA

NOVEMBER-DECEMBER 2017 (ROUND 6)

Photo: PMA2020/Selam Desta

## KEY FAMILY PLANNING INDICATORS

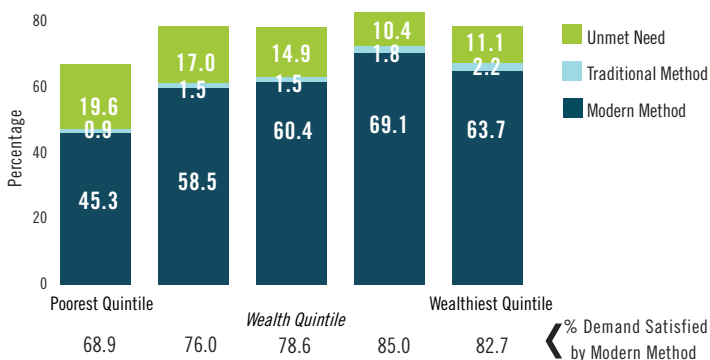
Select Family Planning Indicators Across Recent Surveys  
All Women (n=5,876) and Married Women (n=3,404), Age 15-49

|  | Round 4<br>Nov-Dec 2015 |         | Round 5<br>Nov-Dec 2016 |         | Round 6<br>Nov-Dec 2017 |             |
|--|-------------------------|---------|-------------------------|---------|-------------------------|-------------|
|  | All                     | Married | All                     | Married | All                     | Married     |
| <b>Contraceptive Prevalence Rate (CPR)</b> |                         |         |                         |         |                         |             |
| All Methods CPR                            | 47.8                    | 64.7    | 45.6                    | 61.6    | <b>45.0</b>             | <b>60.5</b> |
| Modern Methods Use (mCPR)                  | 46.0                    | 62.3    | 44.2                    | 59.9    | <b>43.7</b>             | <b>59.0</b> |
| Long Acting/ Permanent CPR                 | 16.2                    | 24.3    | 16.9                    | 24.6    | <b>17.4</b>             | <b>25.0</b> |
| <b>Total Unmet Need</b>                    |                         |         |                         |         |                         |             |
| For Limiting                               | 5.1                     | 7.5     | 5.0                     | 6.8     | <b>4.7</b>              | <b>6.7</b>  |
| For Spacing                                | 8.5                     | 9.4     | 7.9                     | 8.4     | <b>7.8</b>              | <b>8.1</b>  |
| <b>Total Demand</b>                        |                         |         |                         |         |                         |             |
| Demand Satisfied by Modern Method (%)      | 75.0                    | 76.5    | 75.6                    | 77.9    | <b>76.0</b>             | <b>78.2</b> |

### Fertility Indicators (All Women, Age 15-49)

|                           | Round 4<br>Nov-Dec 2015 | Round 5<br>Nov-Dec 2016 | Round 6<br>Nov-Dec 2017 |
|---------------------------|-------------------------|-------------------------|-------------------------|
| Last Birth Unintended (%) | 43.0                    | 42.9                    | <b>43.2</b>             |
| Wanted Later              | 29.2                    | 27.1                    | <b>28.7</b>             |
| Wanted No More            | 13.8                    | 15.8                    | <b>14.5</b>             |

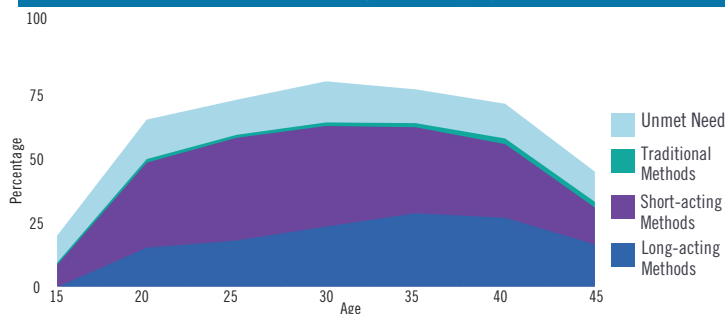
### Current Use and Unmet Need Among Married Women of Reproductive Age, by Wealth Quintile



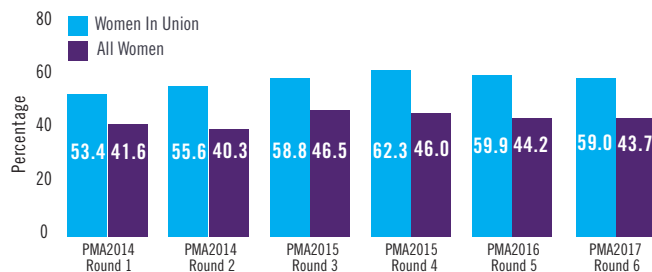
**Performance Monitoring and Accountability 2020 (PMA2020)** uses innovative mobile technology to support low-cost, rapid-turnaround surveys to monitor key indicators for family planning. The project is implemented by local universities and research organizations in 11 countries, deploying a cadre of female resident enumerators trained in mobile-assisted data collection. PMA2020/Kenya was carried out in nine counties in 2014 and 2015 and in 11 counties in 2016 and 2017. PMA2020/Kenya is led by the Ministry of Health in collaboration with International Centre for Reproductive Health Kenya (ICRHK), National Council for Population and Development, and Kenya National Bureau of Statistics. Overall direction and support is provided by the Bill & Melinda Gates Institute for Population and Reproductive Health at the Johns Hopkins Bloomberg School of Public Health. PMA2020 is funded by the Bill & Melinda Gates Foundation.

For more information, please visit <http://www.pma2020.org>

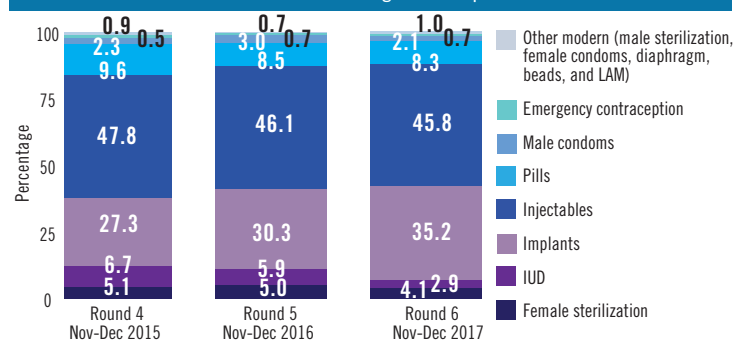
### Unmet Need and Contraceptive Use, by Age (All Women)



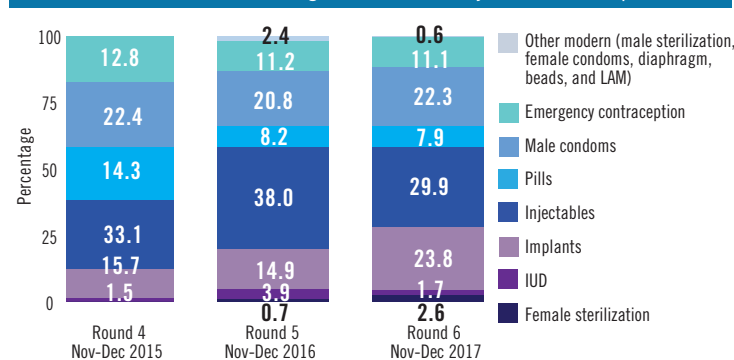
### Modern Contraceptive Prevalence Rate (Women Age 15-49)



### Current Modern Method Mix Among Contraceptive Users In Union



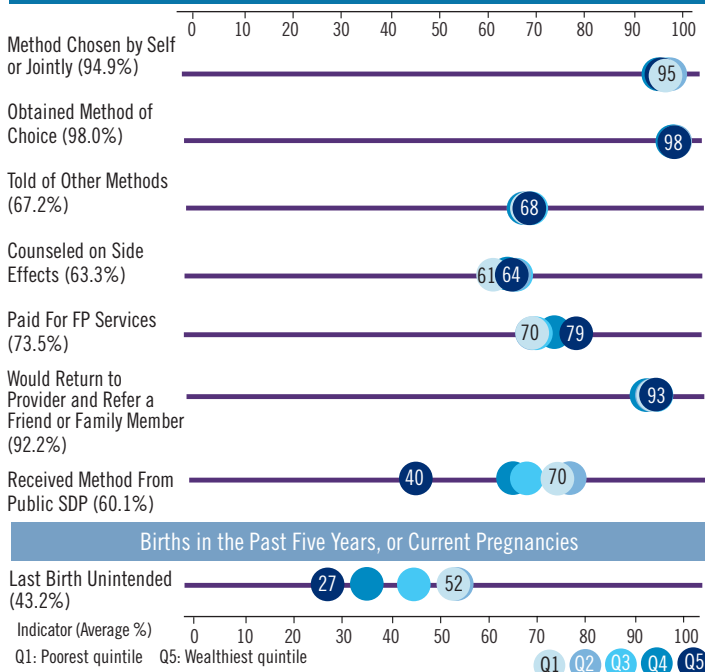
### Current Modern Method Mix Among Unmarried Sexually Active Contraceptive Users



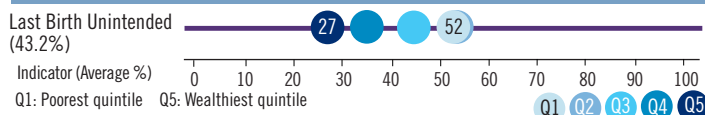
# PMA2020/KENYA

## INDICATORS FOR ACCESS, EQUITY, QUALITY AND CHOICE

For Current Modern Users (%), Indicators by Wealth Quintile

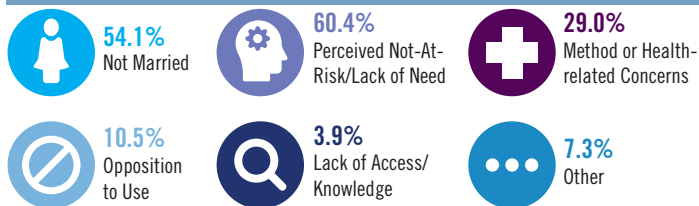


Births in the Past Five Years, or Current Pregnancies



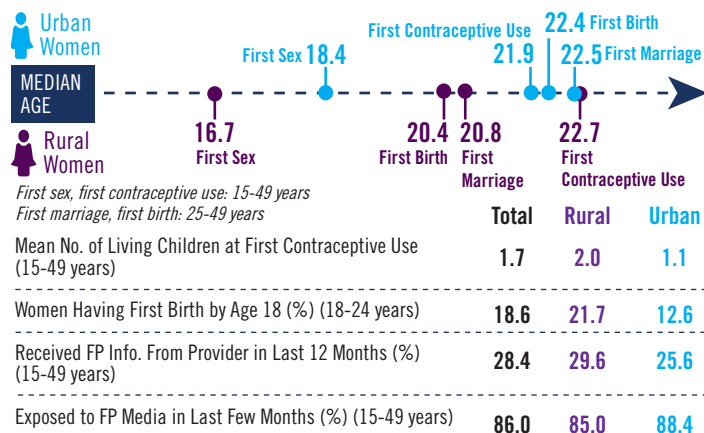
For Current Female Non-Users

Reasons Mentioned for Non-Use Among All Women Wanting to Delay the Next Birth Two or More Years (%)



\* Respondents were able to select more than one answer

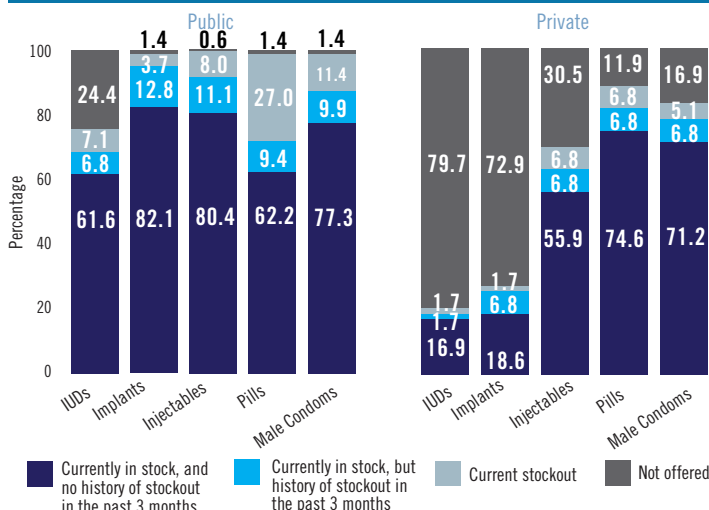
Reproductive Health and Contraceptive Indicators



### SAMPLE DESIGN

PMA2017/Kenya-R6, the sixth round of data collection in Kenya, used a multi-stage stratified cluster design with urban-rural and selected 11 counties as strata. A sample of 151 enumeration areas (EAs) was drawn by the Kenya National Bureau of Statistics from its master sampling frame. The round 6 sample included the two new counties, Kakamega and West Pokot, which were added in round 5. The same set of enumeration areas used from round 5 were selected, adjacent to the areas enumerated in the first four survey rounds. In each EA, households and private health facilities were listed and mapped, with 42 households randomly selected. Households were surveyed and occupants enumerated. All eligible females age 15 to 49 were contacted and consented for interviews. The final sample included 6,106 households, 5,876 females and 417 health facilities (97.8%, 99.0% and 97.2% response rates respectively). Data collection was conducted between November and December 2017.

Percent of Facilities Offering Family Planning with Methods in Stock on Day of Interview (n=417, 353 Public, 64 Private)



Percent of All Public Facilities With At Least 3 or 5 Modern Contraceptive Methods, by Facility Type

| Facility Type | 3 or more methods | 5 or more methods |
|---------------|-------------------|-------------------|
| Hospital      | 98.5              | 97.1              |
| Health Centre | 96.8              | 86.0              |
| Dispensary    | 95.3              | 56.3              |
| Total         | 96.3              | 72.0              |

\*\*Data from facility types with sample size less than 10 were calculated, but are not presented in this brief.

Select Indicators Among Service Delivery Points

|  | Public | Private | Total |
|--|--------|---------|-------|
| Among All Service Delivery Points:                                     |        |         |       |
| Percent Offering Family Planning                                       | 99.7   | 92.2    | 98.6  |
| With Mobile Teams Visiting Facility In Last 12 Months (%)              | 70.8   | 12.5    | 61.9  |
| Supporting CHWs From This Service Delivery Point (%)                   | 72.2   | 10.9    | 62.8  |
| Among Service Delivery Points Offering Family Planning Services:       |        |         |       |
| Average Number Of Days Per Week FP Is Offered                          | 5.3    | 6.1     | 5.4   |
| Offering Female Sterilization (%)                                      | 14.5   | 3.4     | 12.9  |
| Offering FP Counseling/Services To Adolescents (%)                     | 82.4   | 62.7    | 79.6  |
| Charging General User Fees For FP Services (%)                         | 10.5   | 6.8     | 10.0  |
| Availability of Instruments or Supplies for Implant Insertion/Removal* | 88.5   | 93.8    | 88.7  |
| Availability of Instruments or Supplies for IUDs**                     | 94.4   | 83.3    | 93.9  |

\*Among SDPs that provide implants (n=322, 307 public, 15 private). Instruments/supplies include: Clean Gloves, Antiseptic, Sterile Gauze Pad or Cotton Wool, Local Anesthetic, Sealed Implant Pack, Surgical Blade

\*\*Among SDPs that provide IUDs (n=261, 251 public, 10 private). Instruments/supplies include: Sponge-holding forceps, Speculums (large and medium), and Tenaculum