



© 2018 PMA2020 Uganda: Brenda Nakimbugwe

## KEY FAMILY PLANNING INDICATORS

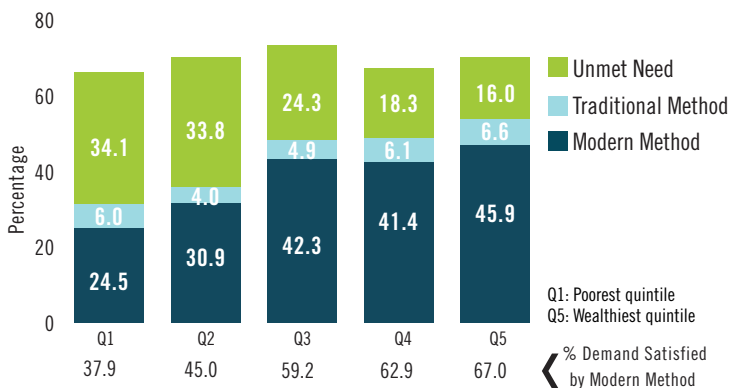
Select Family Planning Indicators Across Recent Surveys  
(All and Married Women, Age 15-49)

	Round 4 (Apr-May 2016)		Round 5 (Apr-May 2017)		Round 6 (Apr-May 2018)	
	All	Married	All	Married	All	Married
<b>Contraceptive Prevalence Rate</b>						
All Methods	31.1	36.9	32.3	38.4	<b>34.7</b>	<b>41.8</b>
Modern Methods	27.5	32.2	28.5	33.9	<b>30.3</b>	<b>36.3</b>
Long Acting/Permanent	6.7	8.6	8.1	10.6	<b>10.2</b>	<b>14.0</b>
<b>Total Unmet Need</b>	<b>23.8</b>	<b>30.5</b>	<b>22.1</b>	<b>29.6</b>	<b>20.5</b>	<b>26.0</b>
For Limiting	8.8	11.3	7.6	10.7	<b>7.4</b>	<b>9.3</b>
For Spacing	15.1	19.2	14.5	18.9	<b>13.1</b>	<b>16.6</b>
<b>Total Demand</b>	<b>55.0</b>	<b>67.4</b>	<b>54.4</b>	<b>68.0</b>	<b>55.2</b>	<b>67.7</b>
Demand Satisfied by Modern Method (%)	50.0	47.7	52.4	49.8	<b>54.9</b>	<b>53.6</b>

Fertility Indicators (All Women)

	Round 4 (Apr-May 2016)	Round 5 (Apr-May 2017)	Round 6 (Apr-May 2018)
Last Birth Unintended (%)	44.0	40.3	<b>46.2</b>
Wanted Later	27.2	27.1	<b>30.9</b>
Wanted No More	16.8	13.2	<b>15.3</b>

Current Use and Unmet Need Among Married Women of Reproductive Age, by Wealth Quintile



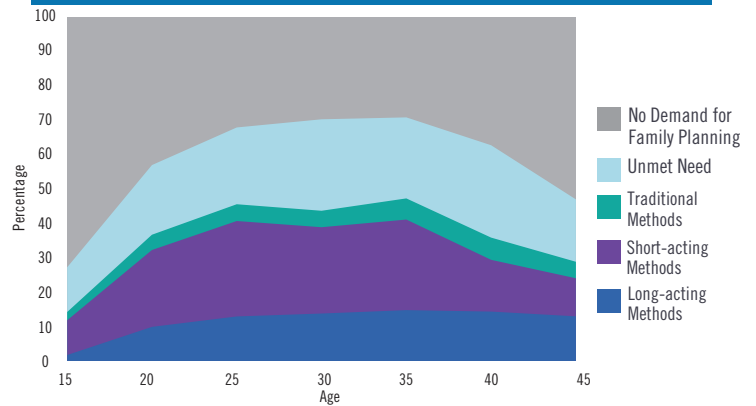
# PMA2020/UGANDA

APRIL-MAY 2018 (ROUND 6)

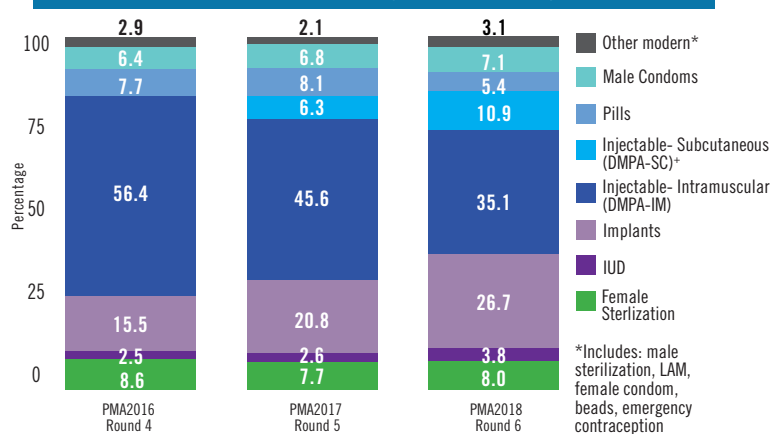
**Performance Monitoring and Accountability (PMA2020)** uses innovative mobile technology to support low-cost, rapid-turnaround surveys to monitor key indicators for family planning. The project is implemented by local universities and research organizations in 11 countries, deploying a cadre of female resident enumerators trained in mobile-assisted data collection. PMA2020/Uganda is led by the Makerere University's School of Public Health at the College of Health Sciences (Mak/CHS/MakSPH), in collaboration with the Uganda Bureau of Statistics (UBOS) and the Ministry of Health. Overall direction and support is provided by the Bill & Melinda Gates Institute for Population and Reproductive Health at the Johns Hopkins Bloomberg School of Public Health and funded by the Bill & Melinda Gates Foundation.

For more information, please visit <http://www.pma2020.org>

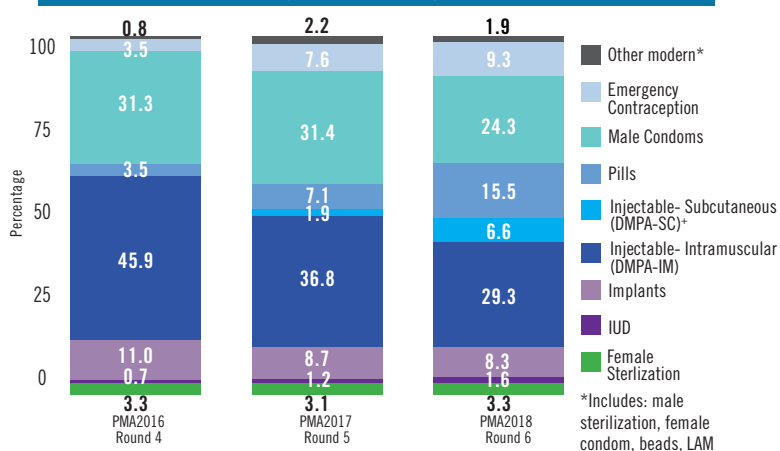
Unmet Need and Contraceptive Use, by Age (All Women)



Current Modern Method Mix Among Married Contraceptive Users



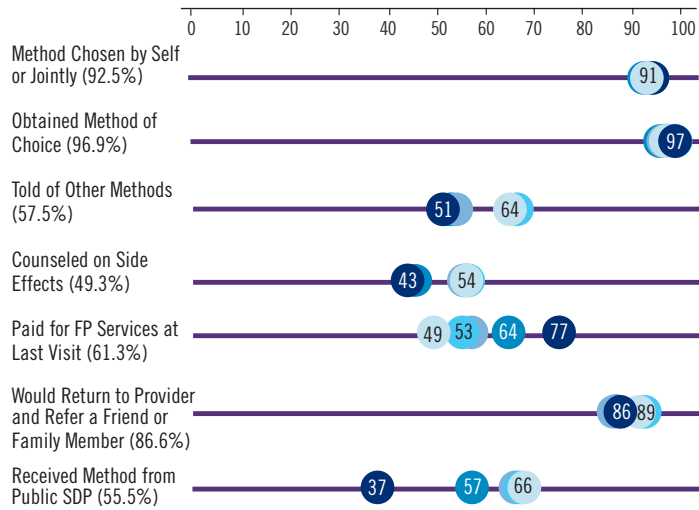
Current Modern Method Mix Among Unmarried Sexually Active Contraceptive Users



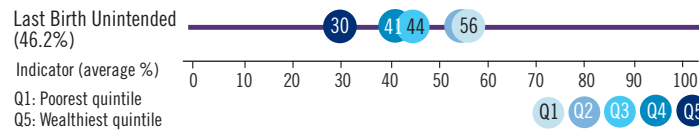
# PMA2020/UGANDA ROUND 6

## INDICATORS FOR ACCESS, EQUITY, QUALITY AND CHOICE

For All Current Modern Users (%), Indicators by Wealth Quintile (n=1,189)

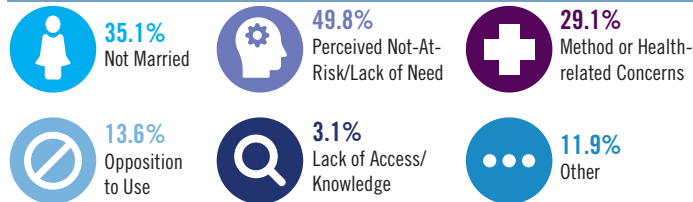


Births in the Past 5 Years, or Current Pregnancies (n=2,410)



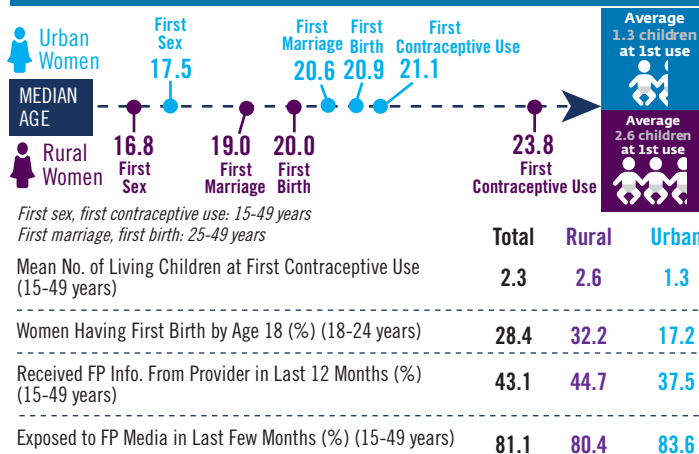
For Current Female Non-Users

Reasons Mentioned for Non-Use Among All Women Wanting to Delay the Next Birth Two or More Years (%)



\* Respondents were able to select more than one answer

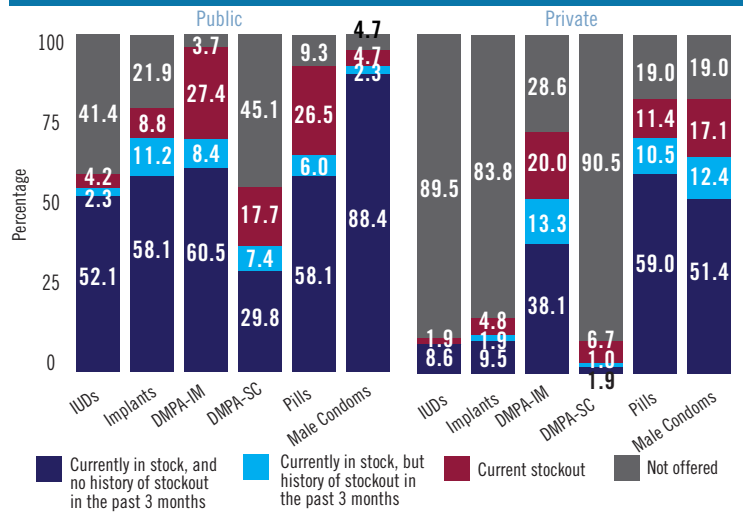
Reproductive Health and Contraceptive Indicators



### SAMPLE DESIGN

PMA2018/Uganda Round 6, the sixth round of data collection in Uganda, uses a two-stage cluster design with urban-rural and region as strata. The project used the same set of 110 enumeration areas (EAs) as those that were selected in the previous round and drawn by the Uganda Bureau of Statistics from its master sampling frame. In each EA, households and health facilities were listed and mapped, with 44 households randomly selected. Households were surveyed and occupants enumerated. All eligible females age 15 to 49 were contacted and consented for interviews. The final sample (and completion rates) included 4,558 households (96.8%), 4,225 de facto females (96.8%) and 342 health facilities (94.7%). Data collection was conducted between April to May 2018.

Percent of Facilities Offering Family Planning with Methods in Stock on Day of the Interview (n=320; 215 public; 105 private)



Percent of Public Facilities Offering At Least 3 or At Least 5 Modern Contraceptive Methods, by Facility Type

Facility Type	3 or more methods	5 or more methods
<b>Higher:</b>		
Hospital	100.0	87.5
Health Center 4	100.0	89.8
<b>Primary:</b>		
Health Center 3	87.5	48.6
Health Center 2	58.7	17.5
<b>Total</b>	<b>83.8</b>	<b>54.6</b>

Select Indicators Among Service Delivery Points

	Public	Private	Total
<b>Among All Service Delivery Points:</b>			
Percent Offering Family Planning	99.5	83.3	93.6
With Mobile Teams Visiting Facility In Last 12 Months (%)	73.6	7.1	49.1
Supporting CHWs From This Service Delivery Point (%)	63.4	8.7	43.3
<b>Among Service Delivery Points Offering Family Planning Services:</b>			
Average Number Of Days Per Week FP Is Offered	5.4	6.3	5.7
Offering Female Sterilization (%)	20.0	4.8	15.0
Offering FP Counseling/Services To Adolescents (%)	94.4	73.3	87.5
Charging General User Fees For FP Services (%)	0.0	1.9	0.6
Availability of Instruments or Supplies for Implant Insertion/Removal <sup>+</sup>	73.2	64.7	72.4
Availability of Instruments or Supplies for IUDs <sup>++</sup>	81.0	81.8	81.0

<sup>+</sup>Among SDPs that provide implants (n=322, 307 public, 15 private). Instruments/supplies include: Clean Gloves, Antiseptic, Sterile Gauze Pad or Cotton Wool, Local Anesthetic, Sealed Implant Pack, Surgical Blade  
<sup>++</sup>Among SDPs that provide IUDs (n=261, 251 public, 10 private). Instruments/supplies include: Sponge-holding forceps, Speculums (large and medium), and Tenaculum

